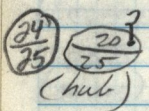


4-17-84

STA. O&R Circle Rdg. Mean

π @ 25 E (Ramp)

25 B	D	90° 05' 40"	36"
	R	270° 05' 32"	
	D	316° 03' 59"	56.5"
	R	136° 03' 54"	



M = 225° 58' 20.5" F = 225° 58' 21"
 Hor. Dist. to 25 B (salvage) = 1,988.01'

π @ 25 B (salvage)

O.C.B.	D	0° 00' 04"	
(E. 1/4 25)	R	179° 59' 58"	01"
25 F	D	60° 23' 10"	
(Ramp)	R	240° 23' 04"	07"
	M =	60° 23' 06"	

O.C.B.	D	90° 05' 35"	
w.M.	R	270° 05' 32"	33.5"

25 F	D	150° 28' 40"	
Ramp	R	330° 28' 35"	37.5"
	M =	60° 23' 04"	
	F M =	60° 23' 05"	

25 F	D	0° 00' 10"	
(Ramp)	R	180° 00' 00"	05"

24 T	D	100° 59' 26"	
	R	280° 59' 16"	21"
	M =	100° 59' 16"	

25 F	D	90° 05' 43"	
(Ramp)	R	270° 05' 31"	37

24 T	D	191° 05' 02"	
	R	11° 04' 55"	58.5"

M = 100° 59' 21.5"
 F.M = 100° 59' 18.8

Dist. to O.C.B. (E. 1/4 25) = 2,216.56'
 Dist. to 25 E (Ramp) = 1,988.02'
 Dist. to 24 T (Ramp) = 1,111.79'